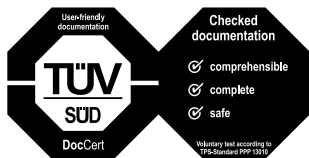




IMPRESSA C50 – Quick Reference Guide



The 'IMPRESSA C50 Instructions for Use' together with these short instructions 'IMPRESSA C50 – Quick Reference Guide' has been awarded the seal of approval by the independent German Technical Inspection Agency, TÜV SÜD, due to its easy-to-understand style, its thoroughness and coverage of safety aspects.

IMPRESSA C50 – Quick Reference Guide





These short instructions do not replace the 'IMPRESSA C50 Instructions for Use'. Make sure you read and observe the safety information and warnings first in order to avoid hazards.

Rinsing the machine

You can initiate the rinse operation manually at any time.



Precondition: ESPRESSO is displayed (example).

- ▶ Place a receptacle under the coffee spout.
- P** ▶ Touch the P symbol for **approximately 2 seconds** until RINSE appears on the display.
-  ▶ Press the Rotary Switch to enter the programme item. RINSE
-  ▶ Press the Rotary Switch to initiate the rinse operation. RINSING, water flows out of the coffee spout.

The rinse stops automatically. ESPRESSO appears on the display (example).


Rinsing the fine foam frother

i This chapter applies to the **professional fine foam frother** and the **fine foam frother**.



To ensure that the fine foam frother always works properly, you must rinse it with water **after every** milk preparation.

Your IMPRESSA will **not** prompt you to rinse the fine foam frother.

Precondition: ESPRESSO is displayed (example).

- ▶ Remove the milk pipe from the milk container or carton.
- ▶ Fill a receptacle with 250 ml of fresh water.
- ▶ Immerse the milk pipe in the receptacle.
- ▶ Place a receptacle under the fine foam frother.
-  ▶ Touch the Steam symbol. HEATING / STEAM

As soon as the machine has heated up, STEAM / READY appears, the light segment on the switch lights up.

-  ▶ Turn the switch to the  position. STEAM appears and the fine foam frother and the milk pipe are rinsed with fresh water.



- ▶ When clean water starts to flow out of the frother, turn the switch back to the ☐ position.

STEAM / READY

The rinsing of the fine foam frother is now complete.

Cleaning the fine foam frother

- i** This chapter applies to the **professional fine foam frother** and the **fine foam frother**.

To ensure that the fine foam frother always works properly, you must clean it **daily** when you have been preparing milk. Your IMPRESSA will **not** prompt you to clean the fine foam frother.

CAUTION If the wrong cleaning agent is used, the machine could be damaged and/or traces could be left behind in the water.

- ▶ Use only original JURA maintenance products.

- i** JURA Cappuccino Cleaner is available from specialised dealers.

Precondition: ESPRESSO is displayed (example).

- ▶ Remove the milk pipe from the milk container or carton.
- ▶ Pour 250 ml of fresh water into a receptacle and add one capful of Cappuccino Cleaner.
- ▶ Immerse the milk pipe in the receptacle.
- ▶ Place a receptacle under the fine foam frother.
- ▶ Touch the Steam symbol.

HEATING / STEAM

As soon as the machine has heated up, STEAM / READY appears, the light segment on the switch lights up.


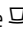
- ▶ Turn the switch to the ⏴ position.
- STEAM appears and the fine foam frother and the milk pipe are cleaned.

- ▶ As soon as the receptacle containing the cleaning solution is empty, turn the switch to the ☐ position.

STEAM / READY

- ▶ Rinse the receptacle thoroughly, fill it with 250 ml of fresh water and immerse the milk pipe in the water.
- ▶ Empty the other receptacle and place it under the fine foam frother once more.

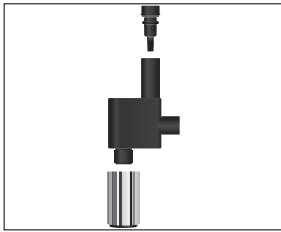


- ▶ Turn the switch to the  position.
STEAM, the fine foam frother and the milk pipe are rinsed with fresh water.
- ▶ As soon as the receptacle containing the fresh water is empty, turn the switch to the  position.
STEAM / READY
The cleaning of the fine foam frother is now complete.

Dismantling and rinsing the fine foam frother

To make sure the fine foam frother works properly, and in the interests of hygiene, it must be dismantled and rinsed **daily** if you have been preparing milk. Your IMPRESSA will not prompt you to dismantle and rinse the frother.

- ▶ Remove the milk pipe and rinse it thoroughly under running water.
- ▶ Carefully remove the fine foam frother from the Connector System[®] by twisting slightly.
- ▶ Dismantle the fine foam frother into its individual parts.
- ▶ Rinse all the parts of the fine foam frother thoroughly under running water. If there are severely dried-on milk residues, firstly immerse the individual parts in JURA Cappuccino Cleaner and then rinse them thoroughly.
- ▶ Re-assemble the fine foam frother.



- i** Ensure that all individual parts are correctly and firmly connected to ensure optimum operation.
- ▶ Firmly attach the fine foam frother to the Connector System[®].

Dismantling and rinsing the professional fine foam frother

To make sure the professional fine foam frother works properly, and in the interests of hygiene, it must be dismantled and rinsed **daily** if you have been preparing milk. Your IMPRESSA will not prompt you to dismantle and rinse the frother.

- ▶ Remove the milk pipe and rinse it thoroughly under running water.
- ▶ Carefully remove the professional fine foam frother from the Connector System[®] by twisting slightly.



- ▶ Dismantle the professional fine foam frother into its individual parts.
- ▶ Rinse all the parts of the professional fine foam frother thoroughly under running water. If there are severely dried-on milk residues, firstly immerse the individual parts in JURA Cappuccino Cleaner and then rinse them thoroughly.
- ▶ Re-assemble the professional fine foam frother.






- i** Ensure that all individual parts are correctly and firmly connected to ensure optimum operation.
- ▶ Firmly attach the professional fine foam frother to the Connector System®.

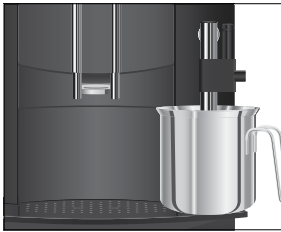
Inserting and activating the filter

Your IMPRESSA no longer has to be descaled if you are using the CLARIS Blue filter cartridge. If you did not activate the filter cartridge the first time you used the machine, you can do this now as follows.

- i** Perform the ‘inserting the filter’ operation without any interruptions. This will ensure that your IMPRESSA always produces its best.

Precondition: ESPRESSO is displayed (example).

- P** ▶ Touch the P symbol for **approximately 2 seconds** until RINSE appears on the display.
-  ▶ Turn the Rotary Switch until FILTER -- is displayed.
-  ▶ Press the Rotary Switch to enter the programme item. NO
-  ▶ Turn the Rotary Switch until YES is displayed.
-  ▶ Press the Rotary Switch to confirm the setting. OK appears briefly on the display. FILTER INSERT, the Maintenance symbol  lights up.
- ▶ Remove and empty the water tank.
- ▶ Open the filter holder.
- ▶ Remove the CLARIS Blue filter cartridge from the Welcome Pack.



- ▶ Insert the CLARIS Blue filter cartridge into the water tank, exerting slight pressure.
- ▶ Close the filter holder. It will click into place audibly.
- i** After two months, the filter will cease to work. Set the date on the date plate on the filter holder in the water tank.
- ▶ Fill the water tank with fresh, cold water and reinsert the tank.
- ▶ Place a receptacle (at least 500 ml) under the fine foam frother.
- ⚠ ▶ Touch the Maintenance symbol.
- SWITCH OPEN, the light segment on the switch lights up.
- ⦿ ▶ Turn the switch to the ↓ position.
- FILTER RINSING, water flows out of the fine foam frother.
- i** You can interrupt rinsing of the filter at any time. To do this, turn the switch clockwise. Turn the switch anticlockwise to continue rinsing the filter.
- i** The water may be slightly discoloured. This is not harmful to health and does not affect the taste.
- Rinsing of the filter stops automatically after approximately 500 ml. SWITCH CLOSE appears on the display.
- ⦿ ▶ Turn the switch to the ☞ position.
- HEATING, the machine heats up.
- ESPRESSO appears on the display (example). The filter is now activated.

Changing the filter

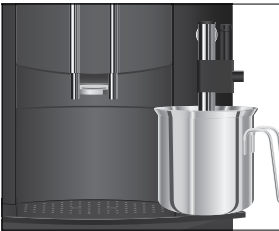
- i** After 50 litres of water have flowed through, the filter will cease to work. Your IMPRESSA will automatically prompt you to change the filter.
- i** After two months, the filter will cease to work. Set the date on the date plate on the filter holder in the water tank.
- i** If the CLARIS Blue filter cartridge is not activated in programming mode, you will not be prompted to change the filter.
- i** CLARIS filter cartridges are available from specialised dealers.

Precondition: **FILTER / ESPRESSO** is displayed (example).

- ❖ ▶ Touch the Maintenance symbol for **approximately 2 seconds**.

FILTER CHANGE appears on the display.

- ▶ Remove and empty the water tank.
- ▶ Open the filter holder and remove the old CLARIS Blue filter cartridge.
- ▶ Insert a **new** CLARIS filter cartridge Blue into the water tank, exerting slight pressure.
- ▶ Close the filter holder. It will click into place audibly.
- ▶ Fill the water tank with fresh, cold water and reinsert the tank.



- ▶ Place a receptacle (at least 500 ml) under the fine foam frother.
- ❖ ▶ Touch the Maintenance symbol.
- ⦿ ▶ Turn the switch to the **⚡** position.

FILTER RINSING, water flows out of the fine foam frother.

i You can interrupt rinsing of the filter at any time. To do this, turn the switch clockwise. Turn the switch anticlockwise to continue rinsing the filter.

i The water may be slightly discoloured. This is not harmful to health and does not affect the taste.

Rinsing of the filter stops automatically after approximately 500 ml. **SWITCH CLOSE** appears on the display.

- ⦿ ▶ Turn the switch to the **☺** position.
- HEATING**, the machine heats up.
- ESPRESSO** appears on the display (example).

Cleaning the machine

After 200 preparations or 80 switch-on rinses, the IMPRESSA will prompt you to clean it.

CAUTION

If the wrong cleaning agent is used, the machine could be damaged and/or traces could be left behind in the water.

- ▶ Use only original JURA maintenance products.

- i** The cleaning programme lasts approximately 20 minutes.
- i** Do not interrupt the cleaning programme. The quality of cleaning will be impaired if you do so.
- i** JURA cleaning tablets are available from specialised dealers.

Precondition: **CLEAN / ESPRESSO** is displayed (example).

- ⚡ ▶ Touch the Maintenance symbol for **approximately 2 seconds**.

EMPTY TRAY appears on the display.

- ▶ Empty the drip tray and coffee grounds container and put them back into the machine.

PRESS RINSE

- ▶ Place a receptacle under the coffee spout.

- ⚡ ▶ Touch the Maintenance symbol.

CLEANING, water flows out of the coffee spout.

The operation is interrupted, **ADD TABLET**.

- ▶ Open the cover of the filler funnel for ground coffee.



- ▶ Insert a JURA cleaning tablet into the filler funnel.

- ▶ Close the cover of the filler funnel.

- ⚡ ▶ Touch the Maintenance symbol.

CLEANING, water flows out of the coffee spout several times.

The operation stops automatically.

EMPTY TRAY

- ▶ Empty the drip tray and coffee grounds container and put them back into the machine.

HEATING

ESPRESSO appears on the display (example). Cleaning is now complete. Your IMPRESSA is once more ready for use.

Descaling the machine

The IMPRESSA builds up deposits of limescale over time and automatically prompts you to descale it when necessary. The degree of calcification depends on the hardness of your water.

⚠ CAUTION

If the descaling agent comes into contact with the skin or eyes, this can cause irritation.

- ▶ Avoid contact with the skin or eyes.
- ▶ Rinse off the descaling agent with clean water. Should you get any descaling agent in your eye, see a doctor.

CAUTION

If the wrong descaling agent is used, the machine could be damaged and/or traces could be left behind in the water.

- ▶ Use only original JURA maintenance products.

CAUTION

If the descaling operation is interrupted, there may be damage to the machine.

- ▶ Allow the descaling programme to run to the end.

CAUTION

If the descaling agent comes into contact with sensitive surfaces (e.g. marble), damage cannot be ruled out.

- ▶ Clean up any splashes immediately.

- ❗ The descaling programme lasts approximately 45 minutes.
- ❗ JURA descaling tablets are available from specialised dealers.
- ❗ If you use a CLARIS Blue filter cartridge and this is activated, you will not be prompted to descale.

Precondition: **DESCALE / ESPRESSO** is displayed (example).

- ⚡ ▶ Touch the Maintenance symbol for **approximately 2 seconds**.

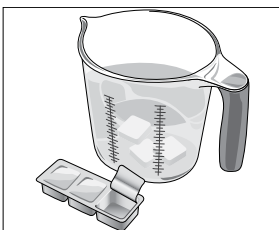
EMPTY TRAY appears on the display.

- ▶ Empty the drip tray and coffee grounds container and put them back into the machine.

AGENT IN TANK

- ▶ Remove and empty the water tank.
- ▶ Completely dissolve the contents of one blister (3 JURA descaling tablets) in a receptacle holding 500 ml of water. This may take several minutes.
- ▶ Pour the solution into the empty water tank and insert it into the machine.

SWITCH OPEN, the light segment on the switch lights up.



IMPRESSA C50 – Quick Reference Guide



- ▶ Carefully remove the fine foam frother from the Connector System[®] by twisting slightly.
 - ▶ Place a receptacle (at least 500 ml) under the Connector System[®].
 - ⊗ ▶ Turn the switch to the \Downarrow position.
DESCALE, water flows out of the Connector System[®] several times. The Maintenance symbol \clubsuit flashes during the descaling operation.
The operation is interrupted, SWITCH CLOSE.
 - ⊗ ▶ Turn the switch to the \Downarrow position.
DESCALE, the descaling operation is continued.
The operation is interrupted, EMPTY TRAY.
 - ▶ Empty the drip tray and coffee grounds container and put them back into the machine.
FILL TANK
 - ▶ Empty the receptacle and place it back under the Connector System[®].
 - ▶ Place another receptacle under the coffee spout.
 - ▶ Remove the water tank and rinse it thoroughly.
 - ▶ Fill the water tank with fresh, cold water and reinsert the tank.
SWITCH OPEN, the light segment on the switch lights up.
 - ⊗ ▶ Turn the switch to the \Downarrow position.
DESCALE, the descaling operation is continued.
The operation is interrupted, SWITCH CLOSE.
 - ⊗ ▶ Turn the switch to the \Downarrow position.
DESCALE, the descaling operation is continued.
The operation is interrupted, DESCALING.
Water flows out of the coffee spout.
EMPTY TRAY
 - ▶ Re-assemble the fine foam frother.
 - ▶ Empty the drip tray and coffee grounds container and put them back into the machine.
ESPRESSO appears on the display (example). Descaling is now complete. Your IMPRESSA is once more ready for use.
- i** If the descaling operation stops unexpectedly, rinse the water tank thoroughly.