

ENA Quick Reference Guide



ENA 3 and ENA 4

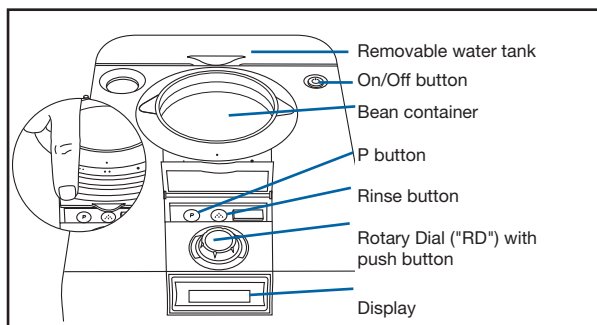


ENA 5

This Guide does not replace the Operating Instructions. For details and cautions you must read all instructions. We highly recommend watching the instructional video.

Traces of Coffee Grounds in New Machine?
This is normal! Grinder was tested during assembly with beans. Despite cleaning, traces of ground coffee may be found.

BLUE TEXT represents display text.



Important: You can only brew coffee when display shows **READY**.

Important: You can always stop the flow of coffee by pushing down on the Rotary Dial ("RD").

1) FIRST TIME EVER PREPARATION

Do not install Clearyl Blue Filter now (chapter 11).

1. Place machine on a flat water/steam/heat-resistant surface. Move the dual coffee spouts up and down.

2. Plug in machine and and push the On/Off button.

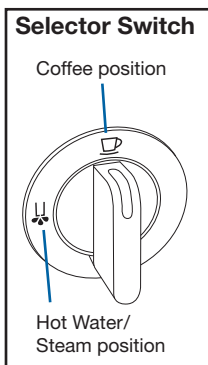
3. **FILL WATER TANK.** Remove water tank (in back of machine) and fill with fresh cold water and replace.

4. **OPEN TAP.** Place a cup under the frother and turn the Selector Switch to the Water/Steam position.

SYSTEM FILLING. CLOSE TAP.

Turn the Selector Switch to the coffee position.

5. **HEATING.** Then **PRESS ROTARY.** Place a cup under the coffee spouts and push the RD. **RINSING. READY.**



6. Fill beans into the bean container on top of machine.
7. Place a large cup underneath the coffee spouts and push the RD. **NORMAL, 1 CUP, READY**. If the display shows **FILL BEANS** push the RD again. Discard the first 2 cups of coffee.

2) DAILY PREPARATION

- Fill fresh water in tank and check bean container.
- Push **On/Off Button**. **HEATING. PRESS ROTARY**. Place a cup under the coffee spouts and push the RD. **RINSING. READY**.

3) PRE-WARMING CUPS / HOTTER COFFEE

Place cup under frother and turn Selector Switch to the Water/Steam position. Let 2 to 3 oz. of water pre-warm the cup and turn the Selector Switch back. Discard the water.

4) COFFEE AND ESPRESSO

READY. All coffee and espresso drinks are performed with the RD. **Default**: Push the RD. ENA will produce **1 CUP** of coffee between 0.5 and 8 oz.

To make two cups simultaneously: READY, turn the RD to **2 CUPS** then push the RD. ENA will produce twice the amount of coffee.

Coffee Strength: MILD, NORMAL, STRONG. Factory setting is NORMAL.

Temperature: NORMAL, HIGH. Factory setting is HIGH.

Note: Using pre-ground coffee: see chapter 10 Inst. book.

5) OVERRIDING STRENGTH AND VOLUME

READY. Turn the RD and select from **MILD, NORMAL, STRONG**. Then push the RD. When brewing starts, turn the RD again to change the cup size from 0.5 to 8 oz.

Note: Chapters 14a, 14b in the instruction book explain re-programming cup size, strength and temperature.

6) CAPPUCCINO/LATTE w. Dual Frother Plus

All ENA models: Dual Frother Plus. ENA 5 also comes with the automatic frothXpress system. Make sure the Dual Frother is always completely pushed up against the steam nozzle!

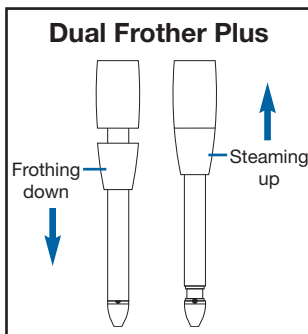
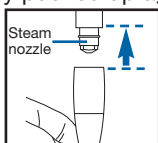
ENA 5: remove the frothXpress and attach the Dual Frother.

READY.

Turn the RD to **STEAM** and push the RD. **HEATING**. Fill a pitcher half full with milk. When the display shows **READY**, immerse the frother into the pitcher and turn the Selector Switch to Water/Steam.

STEAM. With the cylinder

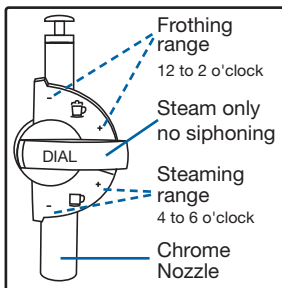
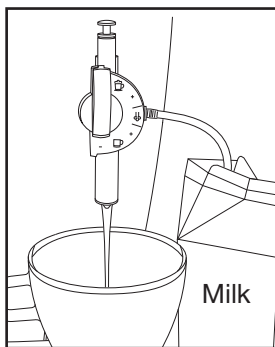
"down", milk is heated and frothed. With the cylinder "up", steaming only. Turn the Selector Switch back to stop the steam. **HOTTER MILK**: continue steaming.



7) CAPPUCCINO/LATTE with FROTHXPRESS SYSTEM

(installed with ENA 5)

- Remove small red cap from the frothXpress and insert black tip of the milk hose. Insert the other end into your cold milk container. Make sure the dial of the frothXpress is pointing to the frothing range (between 12 and 2 o'clock).
- Place your cup under the frothXpress. **READY**.
- Turn the RD to **STEAM** and push the RD. **HEATING**.
- When the display shows **READY** turn the Selector Switch to Water/Steam. **STEAM**. ENA siphons cold milk, heats and froths it directly into your cup.
- Stop frothing by turning the Selector Switch back to Coffee. **READY**. You can now



- continue to produce additional cups with frothed or steamed milk or you can immediately add a shot of espresso.
- Move the cup(s) under the coffee spouts and push the RD. Coffee will be added.

HOTTER MILK: the milk will be hotter in the 2 and 4 o'clock position than in the 12 and 6 o'clock position (for more information see instruction book, chapter 13b).

8) HOT CHOCOLATE AND CAFÉ MOCHA

Add chocolate syrup to your cold milk and stir well. Then steam and froth as described above. Adding a shot or two of espresso creates a Café Mocha.

8a) ENA 5 ONLY: ROTATING COFFEE SPOUT

Rotate the coffee spout to brew coffee through either one or two spouts.

9) HOT WATER, TEA, CAFÉ AMERICANO

READY. Place a cup under the frother. Turn the Selector Switch to the Water/Steam position. **WATER**. Hot water will be released. To stop, turn the Selector Switch back.

Café Americano: 1 or 2 shots of espresso plus 2 to 4 oz. of hot water.

10) CLEANING THE FROTHER SYSTEMS

Important for good frothing performance! See chapters 12b and 13d of the instruction book.

11) INSTALLING/ACTIVATING CLEARLYL BLUE FILTER

Instruction book chapters 17, 17.1, 17.2, 17.3, 17.4

READY.

1. Open the cover behind the Rotary Dial (RD).
2. Push and hold the **P button** until the display shows **RINSE**.
3. Turn the RD to **FILTER –** and press RD: **NO –**
4. Turn the RD to **YES**.
5. Push the RD to confirm. **OK** , then **INSERT FILTER**.
6. Remove the Clearyl Blue filter from its bag and rinse filter under water.
7. Remove the water tank, open the filter holder and insert the filter with the tapered end down. Make sure it fits securely inside the fins.
8. Push down the filter holder until it snaps in.
9. Fill the water tank with fresh cold water and replace.
10. Place a 20 oz. container under the steam nozzle.
11. Push the RD. The display shows **OPEN TAP**.
12. Turn the Selector Switch to the Water/Steam position. **FILTER RINSING**. Approx. 16 oz of water is pushed through the filter and through the steam nozzle. The rinsing water might be slightly discolored. This is not harmful and does not affect the taste of your next coffee. Rinsing stops automatically. The display shows **CLOSE TAP**.
13. Turn Selector Switch back to the coffee position. **HEATING. READY**.

The filter is now activated. **Please note:** ENA will automatically remind you when to change the filter.

12) AUTOMATIC FILTER REPLACEMENT

After approx. 60 liters of water use (~2,000 oz.) the display shows alternating **READY FILTER**.

1. Open the cover behind the RD.
2. Press the **Rinse button**. The display shows **INSERT FILTER**.
3. Remove and empty the water tank.
4. Open the filter holder and remove the old filter.
Continue with steps 6 through 13 from above.

13) CLEANING WITH SPECIAL TABLET

Instruction book chapters 18.1 and 18.2

This cleaning cycle removes coffee oils inside the machine and takes only 15 minutes. The message **CLEAN / READY** will appear after 180 cups of coffee. ENA comes with a pack of two tablets.

Important: only use these special white round cleaning tablets. To re-order see chapter 15.

Note: You can continue to make coffee, however we highly recommend cleaning the machine as described below within the next few days.

Important: Once the cleaning program has started do not interrupt the procedure.

CLEAN / READY.

Make sure the water tank is at least half full.

1. Press the Rinse button. **EMPTY TRAY.**
2. Remove the complete drawer with the grid and the used coffee container (Fig. 1, 12 to 14 instr book) and empty the tray and the used coffee container.
Note: Even if tray is empty, it still needs to be removed for 20 seconds.
3. Replace the complete assembly.
4. The display shows **PRESS ROTARY.**
5. Place a large cup under the coffee spouts and push the RD. The display shows **CLEANING** and water comes through the coffee spouts. This process repeats several times and stops. The display shows **ADD TABLET.**
6. Open the pre-ground coffee chute on top of the ENA by pulling the small lever forward. Drop in one white cleaning tablet.
7. Close the pre-ground coffee chute. The display shows **PRESS ROTARY.**
8. Push the RD. The display shows **CLEANING.** The machine starts the automatic cleaning program by dispensing water in intervals into the container underneath the coffee spouts. The program stops automatically and display shows **EMPTY TRAY.**
9. Remove the cup and then the drawer and tray.
10. Empty the drawer and the ground coffee container and replace.
11. The display shows **READY.**
After the next 180 cups of coffee, the machine will automatically remind you to repeat this cycle.



14. DECALCIFYING / DE-SCALE READY

The machine has an integrated decalcifying program. This program takes about 40 minutes. When the display shows **DE-SCALE / READY** it is time to decalcify the machine. You can still make coffee. It is highly recommended decalcifying the machine within the next 3 to 4 days.

Important CLEARYL BLUE FILTER: If you use the Clearyl water filter and the display shows **DE-SCALE / READY**, then your filter function was not activated. Follow the previous instructions in chapter 11.

Important: Do not interrupt the decalcifying program.

DECALCIFYING AGENT: Only use our special decalcifying tablets Model #66281, see chapter 15 below.

CAUTION: Never use vinegar or any other decalcifying agent. This might damage internal parts of the machine.

CAUTION: Immediately remove any splashes or drops of the decalcifying solution from sensitive surfaces, such as natural stone or wood. Always wait until the decalcifying solution in the water tank has been used up. Do not fill additional decalcifying solution into the water tank.

DE-SCALE READY .

1. Remove the Dual Frother or the frothXpress from the steam nozzle.
2. Open the cover behind the RD and press the **Rinse button**. The display shows **EMPTY TRAY**.
3. Remove the complete drawer with the grid and the used coffee container (Fig. 1, 12 to 14 instr book) and empty the tray and the used coffee container. **Note:** Even if tray is empty, it still needs to be removed for 20 seconds.
4. Replace the complete assembly.
5. The display shows **AGENT IN TANK**.
6. Remove and empty the water tank. (The Clearyl Blue filter should not be in the water tank!)
7. Dissolve 3 of the large square decalcifying tablets in a container with 18 oz. of water (0.5 liters) and pour the solution into the water tank and replace.
8. The display shows **OPEN TAP**.
9. Place a 20 oz. container under the steam nozzle.
10. Turn the Selector Switch to the water/steam position. **DE-SCALING**. Descaling agent flows through the steam nozzle in intervals and will stop automatically.
11. Display shows **CLOSE TAP**. Turn Selector Switch to the Coffee position. **DE-SCALING**. Cycle descales internal parts and stops automatically.
12. **EMPTY TRAY**. Remove the outside container, carefully remove drawer, empty and replace all parts.
13. **FILL WATER TANK**. Remove water tank, rinse and fill with 16 oz. of fresh, water and replace. **OPEN TAP**.
14. Place a 20 oz. container under the steam nozzle and turn the Selector Switch to the water/steam position. **DE-SCALING**. Clean water will push through the steam nozzle removing all descaling liquids.
15. **CLOSE TAP**. Turn the Selector Switch to the Coffee symbol. **DE-SCALING**. Internal cleaning continues.
16. **EMPTY TRAY**. Remove the outside container, then carefully remove the drawer and empty the used coffee container and tray and replace all. **READY**.
17. Re-attach the Dual Frother or the frothXpress to the steam nozzle.
The machine will automatically remind you when it's time to decalcify again.

15) SUPPLIES can be ordered through:

Customer Service, Mail Order Form or www.capresso.com

- ENA Clearyl Blue Water Filter: #67879
- Cleaning Tablets: #62205
- Decalcifying Tablets: #61848

CAPRESSO CUSTOMER SERVICE: 1-800-220-5701

M-F 9AM - 9PM; Sat. 9AM - 5PM EST

FAX: 201-767-9684; email: contact@jura-capresso.com